

INTI-AP102ax

Indoor Wi-Fi 6 Access Point



INTI-AP102ax is an enterprise-grade, concurrent dual-band Wi-Fi 6 indoor access point. INTI-AP102ax supports 5G 4 x 4 : 4 uplink and downlink MU-MIMO between the AP and multiple clients, with up to 2.9 Gbps aggregated data rate. INTI-AP102ax can be operated as a standalone mode or managed by Cloud Controller and on Premise Controller.

Highlights

- Concurrent Dual-Band 2.4GHz & 5GHz
- 802.11ax 4x4:4 UL MU-MIMO supporting up to 2.9 Gbps data rate
- Support up to 32 ESSIDs.
- Enterprise-Grade Wireless Security
- 802.3at Power over Ethernet (PoE)

PT Industri Telekomunikasi Indonesia (Persero)

✉ info@inti.co.id

Kantor Pusat

Jl. Moch. Toha No.77
Bandung 40253
Tlp : (022) 5201501
Fax : (022) 5202444

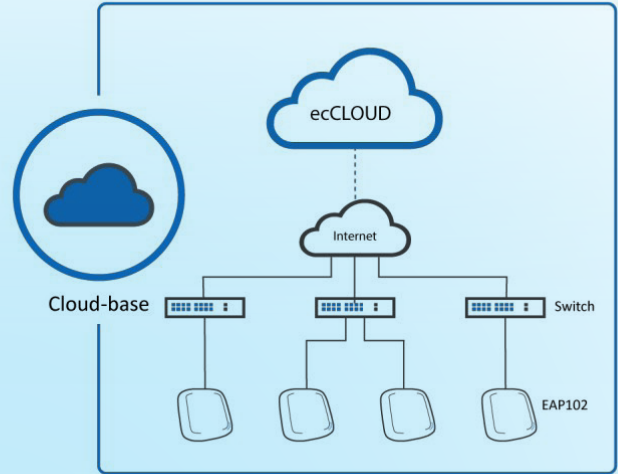
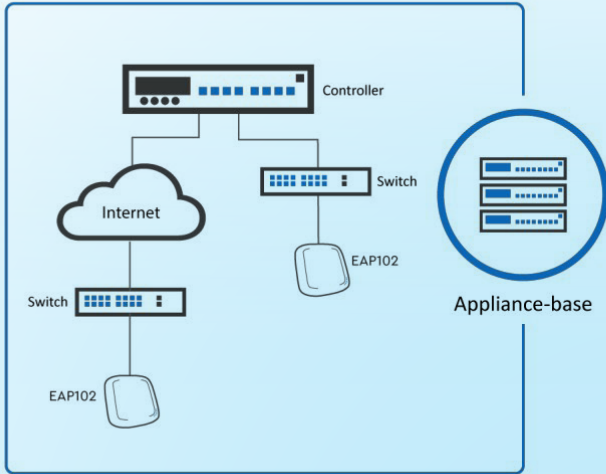
Kantor Cabang

Jl. Balitung 1 No.17 (Senopati)
Jakarta Selatan 12110

Fasilitas Produksi

Jl. Moch. Toha No. 225
Bandung
Tlp : (022) 5206510

Kontak :



Specifications

Physical	
Power	<ul style="list-style-type: none"> DC Input: 12V / 2.0A (Power adapter included) PoE: 802.3at compliant (PoE injector optional)
Dimensions (L x W x H)	: 19.5 cm x 20.1 cm x 3.98 cm (7.68 x 7.91 x 1.57 in)
Weight	: 0.7 kg (1.54 lbs)
Interface	<ul style="list-style-type: none"> Uplink: 1 x 10/100/1000/2.5GBase-T Ethernet, Auto MDIX, RJ-45 with 802.3at PoE LAN: 1 x 10/100/1000/2.5GBase-T Ethernet, Auto MDIX, RJ-45 Console: 1 x RJ-45 Port USB: 2 x USB 2.0 Port¹
LED Indicator	: Uplink / 2.4G-WiFi / 5G-WiFi / Power
Buttons	: Restart / Reset
Environmental Conditions	<ul style="list-style-type: none"> Operating Temperature: 0°C (32°F) to 45°C (113°F) Operating Humidity: 5% to 95% non-condensing
Power Consumption	: 25W max ²
Antennas	<ul style="list-style-type: none"> Type: 4 x Built-in antenna (2.4 GHz & 5 GHz) Gain: 5.5dBi (2.4 GHz, BLE), 7.6 dBi (5 GHz)
Mounts	: Wall/Ceiling/T-bar mount (Mounting kit included)

Wi-Fi	
Standards	<ul style="list-style-type: none"> 802.11ax (Wi-Fi 6) Concurrent dual-band 2.4 & 5 GHz
Supported Data Rates	<ul style="list-style-type: none"> 802.11b: 1, 2, 5.5, 11 Mbps 802.11a/g: 6, 9, 12, 18, 24, 36, 48, 54 Mbps 802.11n: 6.5 – 300 Mbps (20 / 40 MHz) 802.11ac: 6.5 – 1733 Mbps (20 / 40 / 80 MHz) 802.11ax: 3.6 – 574 Mbps (2.4 GHz, 20 / 40 MHz) 802.11ax: 3.6 – 2400 Mbps (5 GHz, 20 / 40 / 80 MHz)
Radio Chains	<ul style="list-style-type: none"> 2.4 GHz: 2 x 2 5 GHz: 4 x 4
Spatial Streams	<ul style="list-style-type: none"> 2.4 GHz: 2; MU-MIMO support 5 GHz: 4; MU-MIMO support
Aggregate Conducted Transmit Power³	<ul style="list-style-type: none"> 2.4 GHz: Up to 23 dBm⁴ 5 GHz: Up to 26 dBm⁴

Channelization	<ul style="list-style-type: none"> 2.4 GHz: 20 / 40 MHz 5 GHz: 20 / 40 / 80MHz
Frequency Range	<ul style="list-style-type: none"> 2.400 – 2.483 GHz 5.150 – 5.850 GHz
Operating Channels	<ul style="list-style-type: none"> 2.4 GHz: 1–13 5GHz⁵: 36–161
ESSIDs	: Up to 16 per radio (32 total)

Performance	
Physical Data Rate	<ul style="list-style-type: none"> Up to 574 Mbps (2.4 GHz) Up to 2400 Mbps (5 GHz)

Features	
Wireless	<ul style="list-style-type: none"> 802.11 k/r Orthogonal Frequency Division Multiple Access (OFDMA) Client Isolation Open Mesh
Network	<ul style="list-style-type: none"> Spanning Tree Protocol (STP) Dynamic Host Configuration Protocol (DHCP) 802.1q Access Control List (ACL) Network Address Translation (NAT) Dynamic VLAN Link Layer Discovery Protocol (LLDP)
Security	<ul style="list-style-type: none"> WPA-Personal (AES) WPA-Enterprise (AES) WPA2-Personal (AES) WPA2-Enterprise (AES) WPA3-Personal (AES) WPA3-Personal Transition (AES) WPA3-Enterprise (AES) WPA3-Enterprise transition (AES) MAC Address Authentication
Maintenance	<ul style="list-style-type: none"> Network Time Protocol (NTP) Standalone Management by ecCLOUD Management by EWS-Series Controller (Complete tunnel) SSH QR Code Onboarding SNMP v2c Remote Syslog
QoS	: RSSI Threshold (Optimal Client Filtering)

